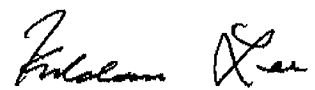


THIS IS EXHIBIT "G" TO
THE AFFIDAVIT OF W. JUDSON MARTIN
SWORN MARCH 30, 2012

A Commissioner, etc.

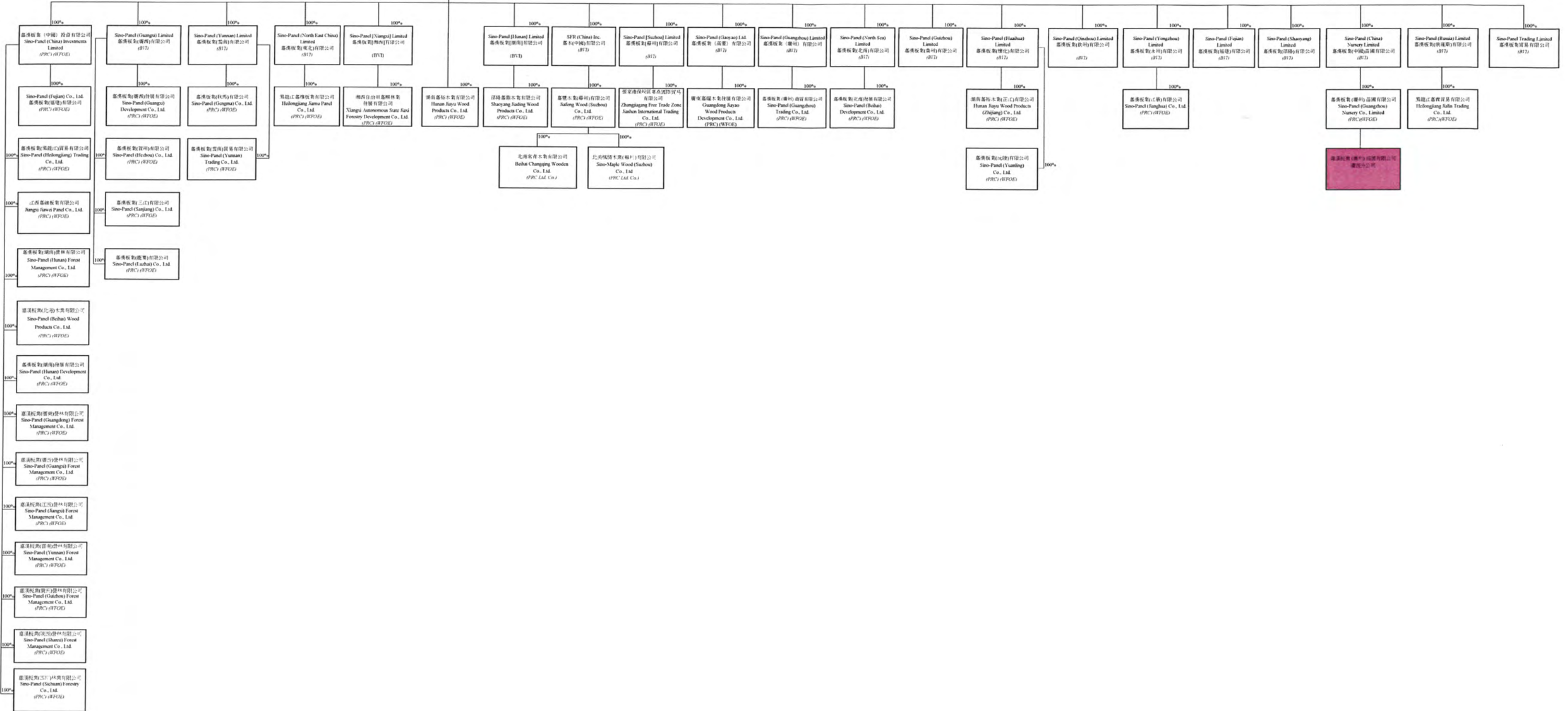

LEE HONGKI KIU KULDARIA
Solicitor, Hong Kong SAR

SINO-PANEL GROUP ORGANIZATION CHART

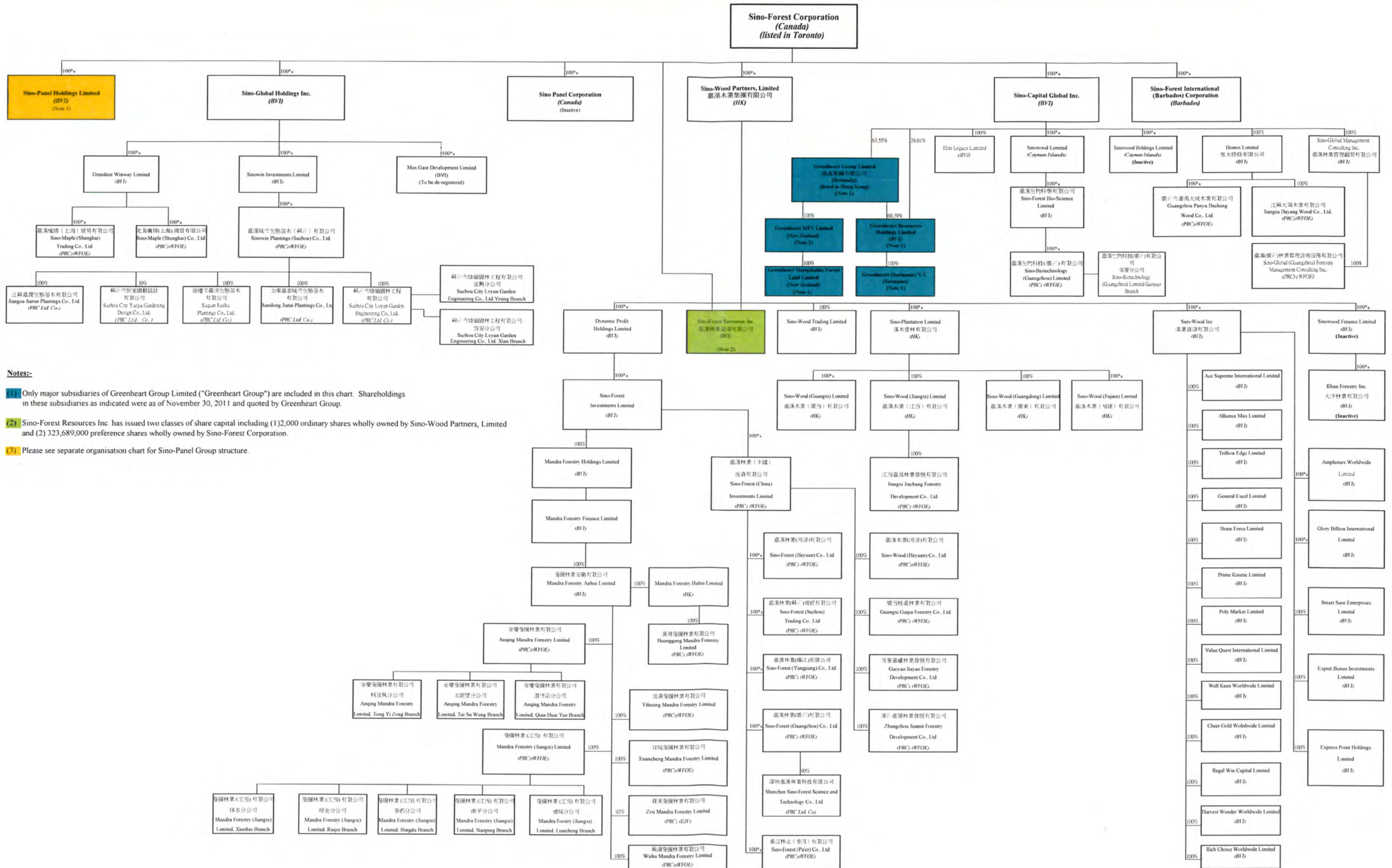
Sino-Forest Corporation
(Canada)
(listed in Toronto)

Sino-Panel Holdings Limited
(BVI)

Sino-Panel (Asia) Inc.
(BVI)



Sino-Forest Corporation Corporate Organization Chart



Notes:-

1 Only major subsidiaries of Greenheart Group Limited ("Greenheart Group") are included in this chart. Shareholdings in these subsidiaries as indicated were as of November 30, 2011 and quoted by Greenheart Group.

2 Sino-Forest Resources Inc. has issued two classes of share capital including (1) 2,000 ordinary shares wholly owned by Sino-Wood Partners, Limited and (2) 323,689,000 preference shares wholly owned by Sino-Forest Corporation.

3 Please see separate organisation chart for Sino-Panel Group structure.